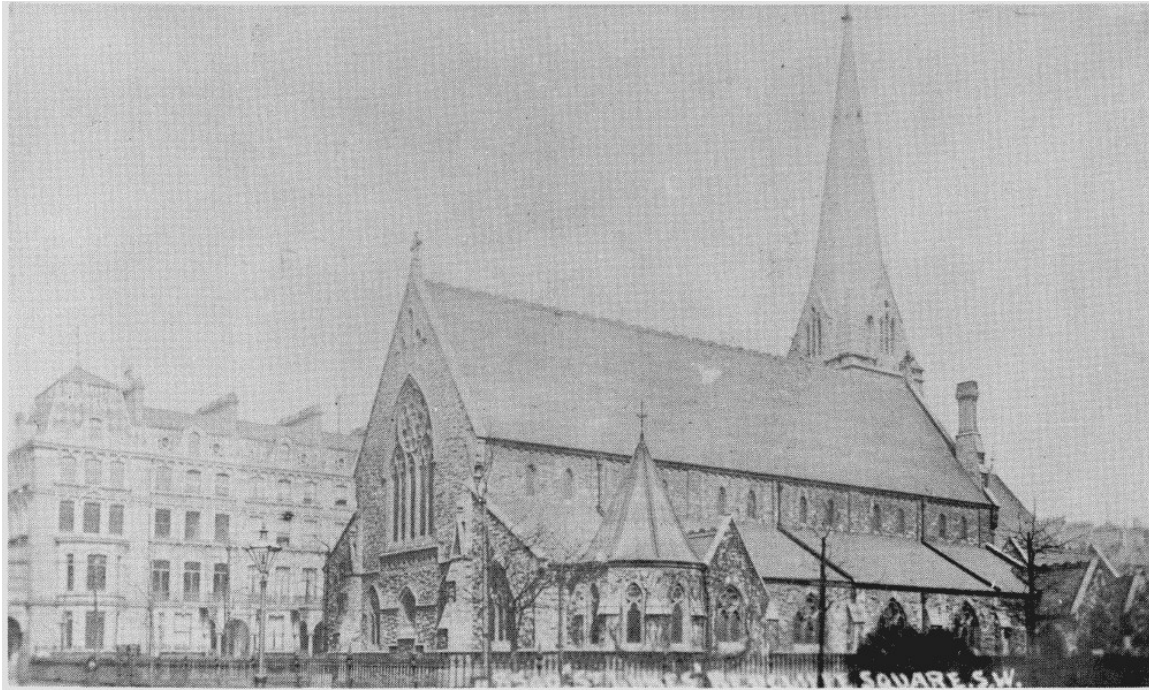


## The Butlers of Charleston



### St. Luke's Church in Redcliffe

Anyone who is acquainted with *Gone with the Wind* remembers that Rhett Butler's family was from Charleston. Interestingly, Margaret Mitchell used familiar relatives in her book.

When Thomas Butler, a ship carpenter, arrived from Redcliffe (southwest London) to Charleston, South Carolina in 1672, he transported with him five servants. Later, in September of 1675, his wife, Sarah, a son and daughter, arrived in Charleston.

The family of Richard Butler, born ca 1675 is traced and available to members in the "genealogy vault" of Georgia Pioneers